

Virtual Info Session! Virtual Info Session! Virtual Info Session! Virtual Info Session! Virtual Info Session! Virtual Info Session! Virtual Info Session! Virtual Info Session! Virtual Info Session! Virtual Info Session!



**RIVER VALLEY RIPPLE**  
*ARTIST RESIDENCY*

# Virtual Informational Session

Wednesday, September 6th

12 - 1 PM CST





# Info Session Overview

- Welcome!
- Meet Luwaina
- Department of Public Transformation (DoPT)  
Overview
- The YES! House Overview
- River Valley Ripple Artist Residency Program  
Overview
- Call for Artists
- Application Process
- FAQs
- Q&A

# MEET LUWAINA

Community Engagement & Events  
Coordinator (The YES! House)





DEPT OF PUBLIC  
TRANSFORMATION

# DoPT Organization Overview



# WHO WE ARE

## OUR MISSION

We are an artist-led nonprofit organization that works to develop creative strategies for increased community connection, civic engagement, and equitable representation in rural places.

## OUR APPROACH

We believe in the power of rural creativity in activating solutions to address community challenges. We collaborate with artists, residents, and community champions on creative, people-centered projects, keeping our core values at the heart of all we do.



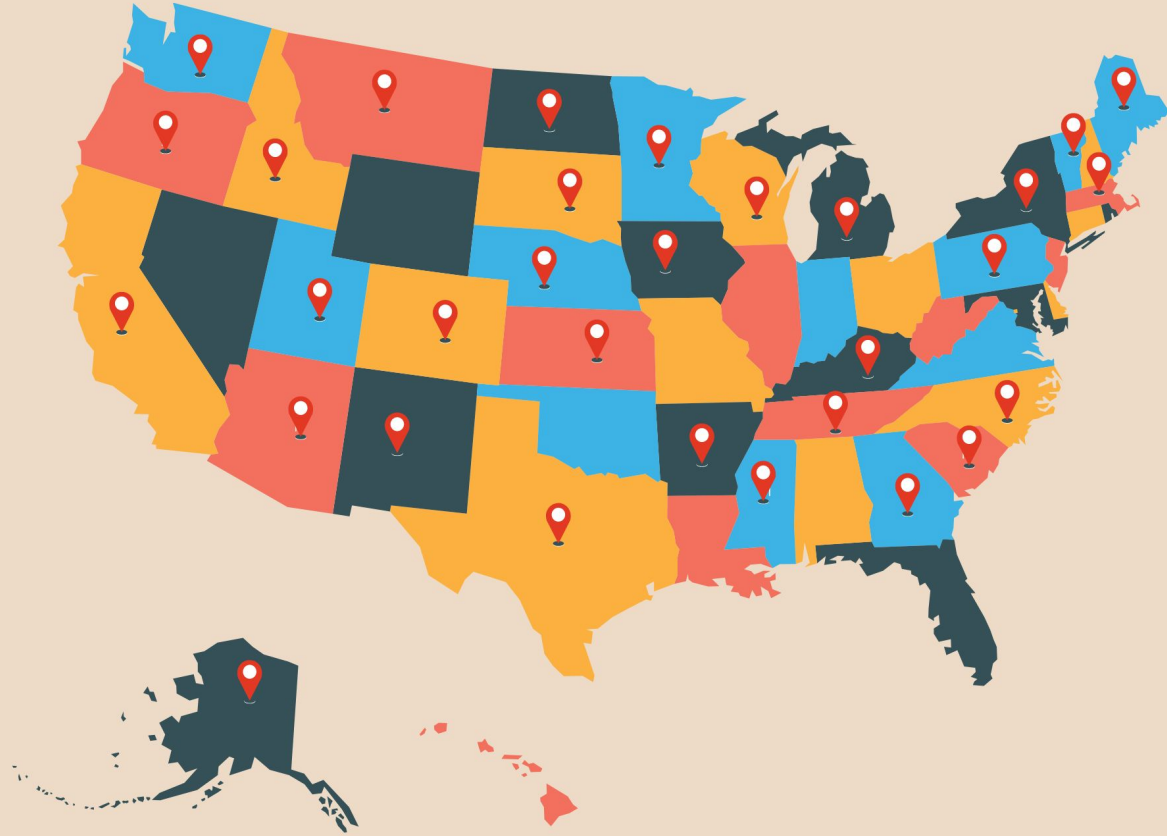
# Our Values

**Accessible Play**

**Deep Compassion**

**Reciprocal Exchange**

**Intentional Representation**



# GEOGRAPHIC SCOPE

## *CONNECT*

### RURAL MUNICIPALITIES & ARTISTS

by amplifying the value of municipal + artist partnership and working with artists on civic initiatives

## *ACTIVATE*

### RURAL COMMUNITY ASSETS

with artist-led, people-centered engagements for imagine/design/build processes

## *SUPPORT*

### RURAL ARTS & CULTURAL WORKERS

through “at home” residencies, communities of practice, and professional development

## *NURTURE*

### RURAL ARTS & CULTURE FIELD

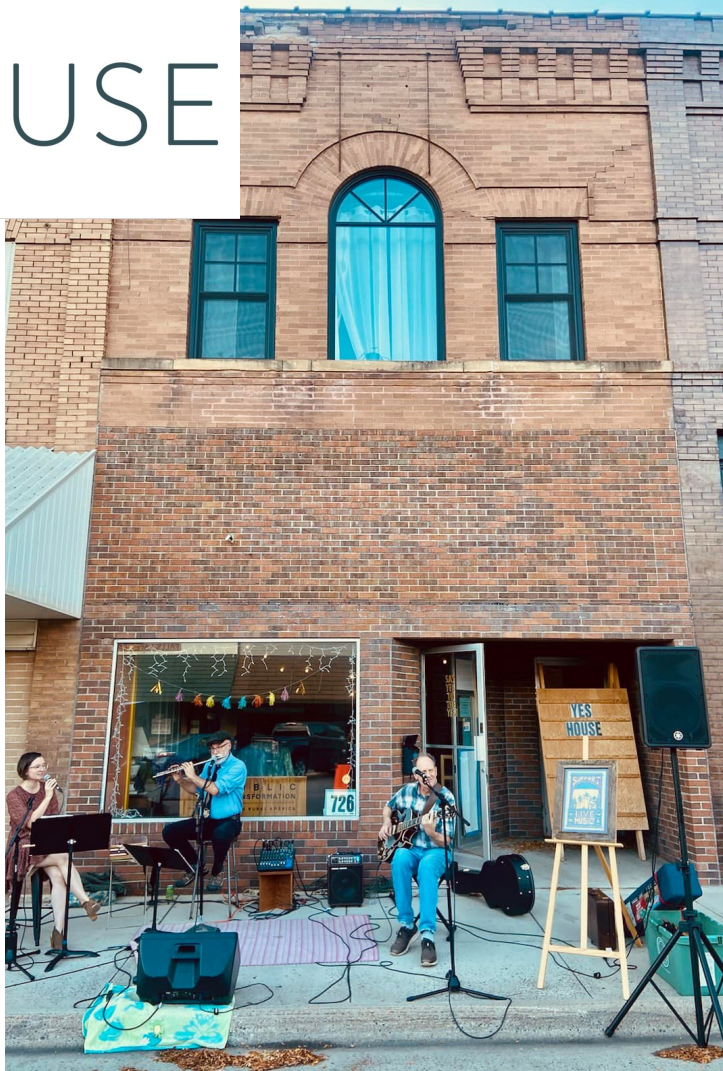
through networking, storytelling, and resource sharing, as well as advocating for geographic equity in philanthropy

# PROGRAM AREAS



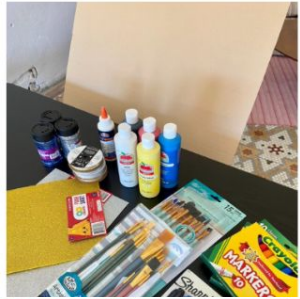


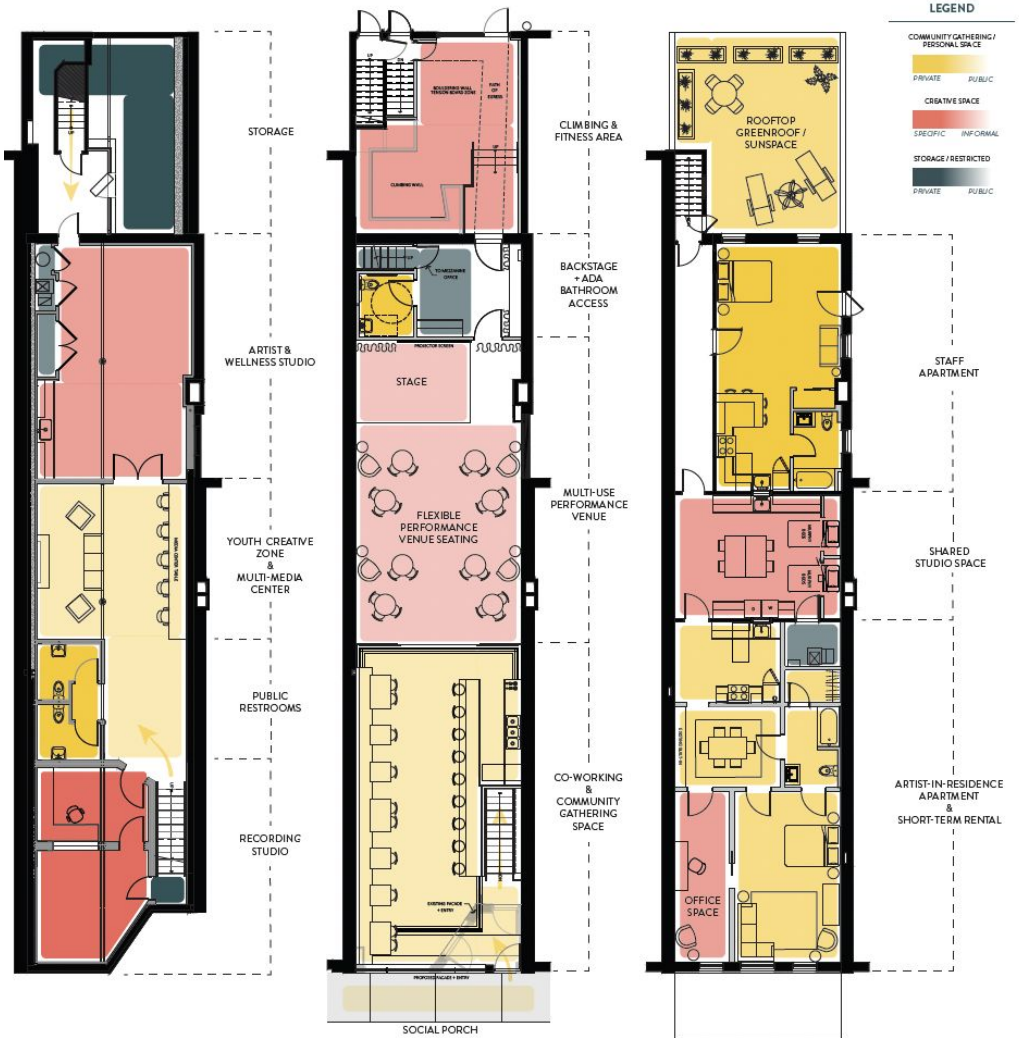
# YES! HOUSE



# WHAT IS THE YES! HOUSE?!

An in-progress creative community gathering space located at 726 Prentice Street in Granite Falls





01 | LIVING ROOM / BEDROOM



02 | WINDOWS



03 | DINING ROOM



04 | SHARED STUDIO SPACE



05 | BATHROOM



# THE CREATIVE COLLABORATION TEAM



The YES! House Creative Collaboration Team (CCT) consists of 9 community members from the Granite Falls area, that work closely with the Community Engagement & Events Coordinator to plan and host all of the events and programming at The YES! House.

Pictured here: Luwaina Al-Otaibi, Mary Gillespie, Allie Cole, Joe Hauger, Beth Pullan, Edwin McGill, Nicole Zempel, Jeremy Radtke, Janel Guertin, Tyler Gastecki

# What is the role of the CCT?



The CCT works with the Community Engagement & Events Coordinator to plan and coordinate The YES! House Event Series.

Core theme of the 2023 event series: Neighboring!

- Opportunities for people to have fun and connect with each other
- Explore different points of views and cultures
- Share and learn new things
- Work, meet, and collaborate with local, regional, and national artists

The YES! House strives to be an inclusive and creative space that feels welcoming for everyone. We envision that these events will strengthen our connection with our community and help us better understand how The YES! House can be a beneficial, creative space for all!

# NEIGHBORING: THE SERIES



Neighbors learning from each other, creating together, making new connections, and strengthening old ones

## Event Examples:

- Monthly learn from your neighbor
- Monthly touring artists
- Local artists and community events
- Creative and wellness workshops
- Community choir
- Open door hours - starting in September
- And much more!!!

Virtual Info Session! Virtual Info Session! Virtual Info Session! Virtual Info Session! Virtual Info Session! Virtual Info Session! Virtual Info Session! Virtual Info Session! Virtual Info Session! Virtual Info Session!



**RIVER VALLEY RIPPLE**  
*ARTIST RESIDENCY*

# Virtual Informational Session

Wednesday, September 6th

12 - 1 PM CST



**River Valley Ripple Artist Residency** is a Southwest Minnesota (SWMN) Artist Residency program focused on uplifting and supporting emerging and established rural artists with time, space, and resources to further develop and/or expand their artistic practice.





for Artists! Call for Artists! Call for Artists! Call f  
ll for Artists! Call for Artists! Call for Artists! Call  
for Artists! Call for Artists! Call for Artists! Call f  
ll for Artists! Call for Artists! Call for Artists! Call  
Call for Artists! Artists! Call for Artists! Ca  
! Call for A ts! Call for Artist  
Call fo



**RIVER VALLEY RIPPLE**  
*ARTIST RESIDENCY*



DoPT is seeking up to  
6 SWMN artists to spend  
**1 to 4 weeks** at **The YES!  
House** in Granite Falls, MN.

~

This is a **self-directed** residency program and it is a great fit for individuals who are **ready to step further into their identity as an artist** and are looking for **space to balance their time, energy, and commitment to their artistic practice.**

# Selected Artists will receive:

- **1 to 4 weeks** of dedicated space and time at The YES! House to work on their artistic practice, skill development, or creative project(s) of their choice;
- **\$500 weekly stipend** during the duration of the residency (for 1, 2, 3, or 4 weeks);
- **Up to \$150** for supplies and materials;
- **A living space** for the duration of the residency (one-bedroom apartment at The YES! House (located at 726 Prentice St., Granite Falls, MN));



# Selected Artists will receive:

- **Space for working on projects:** small office/studio area in the one-bedroom apartment, small shared space with laundry and utility sink, access to other areas in The YES! House, if/when available;
- **A welcome-to-town meal** at a local establishment and a downtown walking tour;
- **Introductions** to other artists, community partners, and local residents, if desired;
- **Staff support** in promoting and hosting an ‘artist salon’ public event.



# Lodging & Workspace

- **Private, one-bedroom fully furnished apartment** with a full bath, full kitchen, small office/studio space. Linens (sheets, bedding, towels, washcloths), cookware, dishware, appliances, and coffee pot are all included.
- **A shared working space** with a utility sink, two extra murphy beds, microwave, and washer and dryer.
- **The main floor of The YES! House** will be available for the artist salon and for work space upon request/when available.
- **Staff support** available to answer any questions about lodging and workspace during residency.



# RVR Artist Residency

## Public Event: Artist Salon Examples

- Artist Meet & Greet
- Exhibition/Showcase
- Presentation
- Workshop
- Works-in-Progress Performance
- Public reading
- Artist Talk/Q&A
- Film Screening/Trailer
- Or... ?!





## Eligible Artists:

- **Reside within the 18 counties of Southwest Minnesota** which includes Big Stone, Chippewa, Cottonwood, Jackson, Kandiyohi, Lac qui Parle, Lincoln, Lyon, McLeod, Meeker, Murray, Nobles, Pipestone, Redwood, Renville, Rock, Swift, and Yellow Medicine counties and the tribal nations that share that geography: Upper Sioux Community Pezihutazizi Oyate and Lower Sioux Indian Community.
- **Are over the age of 18;**
- **Identify as an emerging or established artist** (see DoPT's broad definition of artist in the FAQ section);
- **Are interested in sharing their work** and/or creative process with the public.



# Selection Criteria

RVR Selection Committee will include representatives from the CCT and DoPT staff. They will be reviewing the applications based on the following criteria:

- **Artistic Growth:** The applicant articulates a personal or artistic goal and/or potential for their artistic growth through participation in the RVR Artist Residency program.
- **Readiness:** The applicant shows how and why this residency is a good fit for their artistic growth at this time in their life/career/work.
- **Capacity:** The applicant demonstrates the availability and commitment to fully participate in the residency program.
- **Applicant Diversity:** The selection process will prioritize diversity of geographic locations across the region, artistic mediums, and range of experience (emerging to established artists). Priority will be given to Native, BIPOC (Black, Indigenous, People of Color), and LGBTQIA+ artists and culture bearers.



# RVR Residency Timeline

- **Aug 25, 2023** Call for Artists Application Form Opens
- **Sept 6, 2023** Virtual Informational Session from 12-1pm CST
- **Oct 8, 2023** Applications are due at 11:59 PM CST
- **Oct 9-31, 2023** Artist selection process + applicant notifications
- **November, 2023** Public announcement of selected artists
- **Dec 2023–May 2024** *Residencies - each selected artist provided 1 to 4 weeks during this timeframe*
- **May-June, 2024** Artist feedback call + program wrap-up



# How to Apply



To apply, complete the simple [online application form](#).

To access the online application, visit [www.publictransformation.org/RVR](http://www.publictransformation.org/RVR) and click the “**Apply Here**” button.

If you would prefer you are welcome to submit a video application instead of filling out the application form - detailed instructions on the website.

Application due date is **October 8, 2023 at 11:59pm CST**. Late applications will not be reviewed.

# Frequently Asked Questions

Please note that the FAQs may continue to be updated throughout the application process as we receive questions from applicants. If you have additional questions, please contact [luwaina@publictransformation.org](mailto:luwaina@publictransformation.org)

---

WHAT IS THE DEFINITION OF EMERGING AND/OR ESTABLISHED ARTIST? 

---

THE CALL MENTIONED 1 TO 4 WEEKS, DO I HAVE TO BE AVAILABLE FOR THE ENTIRE 4 WEEKS? AM I GUARANTEED MY FIRST CHOICE OF RESIDENCY DURATION OR HOW MANY WEEKS I WOULD LIKE MY RESIDENCY TO BE? 

---

HOW CAN I USE MY SUPPLIES AND MATERIALS BUDGET? 

---

HOW CAN I USE MY LIVING STIPEND? 

---

WHAT KIND OF STAFF SUPPORT WILL BE AVAILABLE ONSITE? 

# Thanks to our funders!



*This RVR Artist Residency is made possible by the voters of Minnesota through a grant from the Southwest Minnesota Arts Council, thanks to a legislative appropriation from the arts and cultural heritage fund.*



DEPT OF PUBLIC  
TRANSFORMATION

# Q&A

[www.publictransformation.org/rvr](http://www.publictransformation.org/rvr)

Luwaina Al-Otaibi  
Community Engagement & Events  
Coordinator  
[luwaina@publictransformation.org](mailto:luwaina@publictransformation.org)